



Habitat
for Humanity®
Greater Los Angeles

ReStore®

WE NEED YOUR DONATIONS!



The ReStore was established to provide a self-sustaining funding source for Habitat for Humanity of Greater Los Angeles (HFH GLA) and to provide our local communities with low-cost building and home improvement materials.

- The ReStore accepts new, used, discontinued, or surplus building materials, appliances & home furnishings from companies, contractors, retailers, film and television studios and individuals.
- The ReStore sells donated items at drastically-reduced prices to the general public. All proceeds support HFH GLA's commitment to building and renovating homes in partnership with low-income, hard-working families and individuals in Greater Los Angeles.
- Trucks are sent out Monday – Saturday to pick-up items all over Los Angeles. Please contact a Donations Coordinator to arrange a pick-up of your donation by calling 310-323-4663 or Email: Restore@habitatla.org. All donations are tax-deductible. Pick-up service is free, with a \$5 fuel surcharge.



The Habitat ReStore accepts (*but is not limited to*) the following materials:



A/C & Heating: Less than 8 years old, whole house or window.

Appliances: Clean and in working condition, less than 8 years old.

Brick & Block: Neatly stacked and palletized, no more than 1 foot high. Minimum quantity for block: 25; no broken pieces.

Cabinets: Only complete and modular cabinets with all doors and drawers, standard and special sizes, slight damage okay, already removed.

Carpet: New and unused, room-sized pieces or larger.

Doors: Interior and exterior doors; no broken glass or damaged wood; prefer hardware removed and bagged separately. No hollow, slab doors.

Electrical: Fixtures, parts, supplies, slight damage okay.

Furniture: Home, antique, no worn, stained or ripped upholstery, overall good condition.

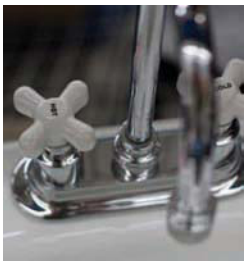
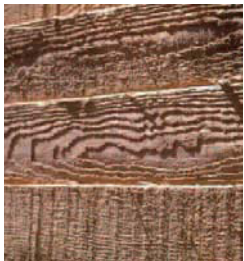
Hardware: Knobs, hinges, locks, nails, screws, nuts & bolts and fasteners, prefer separated by type/style.

Lumber: Dimensional: 6 ft. or longer; sheets: 1/2 sheet or larger, free of rot, nails and screws. No scraps.

Plumbing: Clean and in usable condition, fixtures, parts & supplies accepted. Toilets should be completely clean and sanitized. Toilets need to be 1.6 gallons per flush or less.

Tile: Wall and floor any size. Boxed and clean, unbroken. Minimum quantity: 20 sq. ft.

Windows: Vinyl or wood, new construction and retro-fits with dual pane glass. No aluminum-framed, single pane, broken glass or damaged wood frames.



We cannot accept used mattresses or box springs.

Material donations can also be dropped off at our ReStore locations from 9:30am - 5:30pm.

In accordance with the Consumer Product Safety Improvement Act, we can no longer accept any children's items.



ReStore – Gardena Location

17700 S. Figueroa St.
Gardena, CA 90248
310-323-HOME

Deliveries accepted during store hours.

ReStore – Norwalk Location

11029 Alondra Blvd.
Norwalk, CA 90650
310-323-HOME

Deliveries accepted during store hours.

ReStore Hours

(both locations):
Tuesday - Saturday: 9am– 6pm
www.shophabitat.org