



**Completed Projects**

Greater Los Angeles	
1	101st (1 unit)
2	105th (2 units)
3	112th (1 unit)
4	12th St (3 units)
5	1775 Santa Ana (1 unit)
6	21st St (2 units)
7	222nd St (1 unit)
8	2456 Santa Ana (3 units)
9	2744 Hill St (1 unit)
10	52nd St (3 units)
11	53rd Street (2 units)
12	55th St - Rehab (1 unit)
13	5800-5818 Gardena (3 units)
14	635 E Hill St - Rehab (1 unit)
15	7th St (2 units)
16	830 Gardena (1 unit)
17	8th St (1 unit)
18	96th Street (26 units)
19	Alabama St (1 unit)
20	Anthony/Alabama (2 units)
21	Atlantic (1 unit)
22	Bell Garden (4 units)
23	Bliss Street (1 unit)
24	Bonnie Beach (2 units)
25	Broadway (2 units)
26	Carson - Rehab (1 unit)
27	Century (3 units)
28	Compton (4 units)
29	Daisy Ave (3 units)
30	Dickerson Ave (4 units)
31	Earthquake Recovery (5 units)
32	El Capitan (1 unit)
33	Gaviota/Mayor's Bld. (1 unit)
34	Harborside (16 units)
35	Hickory - Rehab (1 unit)
36	JCWP 1995 (30 units)
37	Knopf Street (1 unit)
38	La Cuarta (4 units)
39	Laurel Ave (1 unit)
40	Le Flores Ave (1 unit)
41	Leigh Ct (2 units)
42	Louise Street (5 units)
43	Lynwood/Nichols (2 units)
44	Main St - Thruway (1 unit)
45	Norwalk - Hemocosa St (1 unit)
46	Orcutt Ave (6 units)
47	Plaza Del Amo (16 units)
48	Santa Fe (1 unit)
49	Santa Fe - Rehab (2 units)
50	Smith Pl (1 unit)
51	USC (1 unit)
52	Venice (2 units)
53	Vermont Village (14 units)
54	Watts Ave (1 unit)
55	Wesley Dr (2 units)
56	Wilmington (26 units)
57	Wilmington Ave (1 unit)

Pomona Valley	
58	Chino - 10th St (6 units)
59	Chino - 10th St (2 units)
60	Chino - 2nd St (1 unit)
61	Chino - 2nd St (1 unit)
62	Chino - 5th St (1 unit)
63	Chino - D St (1 unit)
64	Chino Hills (1 unit)
65	Claremont (6 units)
66	LaVerne - First St (1 unit)
67	LaVerne - Walnut (2 units)
68	Montclair (1 unit)
69	Ontario - Azalea Ave (1 unit)
70	Ontario - E Nocta St (1 unit)
71	Ontario - F St (1 unit)
72	Ontario - Nocta St (1 unit)
73	Ontario - S Fern Ave (2 units)
74	Ontario - S Sulfana St (1 unit)
75	Ontario - West E St (1 unit)
76	Ontario - West F St (1 unit)
77	Pomona - S Hamilton Blvd (2 units)
78	Pomona - Wisconsin (1 unit)
79	RC - Cornet St (1 unit)
80	RC - Humboldt Ave (1 unit)
81	San Dimas (1 unit)
82	Upland (1 unit)

San Fernando / Santa Clarita Valleys	
83	4th Street (1 unit)
84	Casa De Susana (9 units)
85	Castaic Rehab (1 unit)
86	Don Adams Villas (8 units)
87	Elwood Elms (8 units)
88	KKC (1 unit)
89	Mott Avenue (1 unit)
90	Northridge Earthquake, Mission Hills (1 unit)
91	Northridge Earthquake, Mission Hills (1 unit)
92	Northridge Earthquake, Mission Hills (1 unit)
93	Northridge Earthquake, Mission Hills (1 unit)
94	Northridge Earthquake, Valencia (1 unit)
95	Northridge Earthquake, Valencia (1 unit)
96	Northridge Earthquake, Valencia (1 unit)
97	Northridge Earthquake, Valencia (1 unit)
98	Northridge Earthquake, Valencia (1 unit)
99	Northridge Earthquake, Valencia (1 unit)
100	Northridge Earthquake, Valencia (1 unit)
101	Northridge Earthquake, Valencia (1 unit)
102	Northridge Earthquake, Valencia (1 unit)
103	Northridge Earthquake, Valencia (1 unit)
104	Northridge Earthquake, Pacoima (1 unit)
105	Northridge Earthquake, Pacoima (1 unit)
106	Northridge Earthquake, Pacoima (1 unit)
107	Northridge Earthquake, Pacoima (1 unit)
108	Northridge Earthquake, Pacoima (1 unit)
109	Northridge Earthquake, Pacoima (1 unit)
110	Northridge Earthquake, Pacoima (1 unit)
111	Northridge Earthquake, Pacoima (1 unit)
112	Northridge Earthquake, Sylmar (1 unit)
113	Northridge Earthquake, Sylmar (1 unit)
114	Northridge Earthquake, Sylmar (1 unit)
115	Northridge Earthquake, Sylmar (1 unit)
116	Pierce St Villas (20 units)
117	SCV Fire Rehab, Canyon Country (1 unit)
118	SCV Fire Rehab, Newhall (1 unit)
119	SCV Fire Rehab, Santa Clarita (1 unit)
120	SCV Fire Rehab, Saugus (1 unit)
121	SCV Fire Rehab, Saugus (1 unit)
122	SCV Fire Rehab, Saugus (0 units)
123	Sheldon Road (1 unit)
124	Val Verde Rehab (1 unit)

San Gabriel Valley	
125	1255 Orange St (4 units)
126	17173 Wilshire Ave (4 units)
127	1830 Gardena Ave (3 units)
128	2502-2506 Burkett Rd (3 units)
129	401-411 S Pacific Ave (4 units)
130	531-533 Allan Ave (2 units)
131	602-634 Euclid Ave (16 units)
132	Palmer Homes (3 units)

**Planned Projects**

Greater Los Angeles	
A	Burbank (8 units)
B	Downey (1 unit)
C	Grand Avenue (1 unit)
D	Lynwood (3 units)
E	Lynwood - Clark & Redwood (2 units)
F	Lynwood - Ferwood (3 units)
G	Lynwood/Imperial Hwy (10 units)
H	Lynwood/Palms (3 units)
I	Norwalk - Lakeland Ave (1 unit)
J	South Gate - Liberty (12 units)
K	South Gate - San Gabriel (2 units)
L	Wilmington "LSt" (8 units)

San Fernando / Santa Clarita Valleys	
M	Lake Elizabeth (1 unit)
N	Pierce St Villas North (42 units)
O	SCV Fire Rehab, Canyon Country (1 unit)
P	SCV Fire Rehab, Canyon Country (1 unit)
Q	SCV Fire Rehab, Saugus (1 unit)

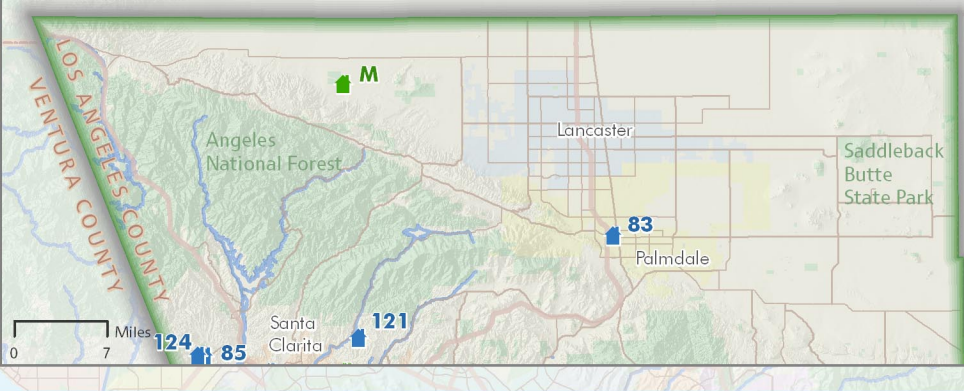
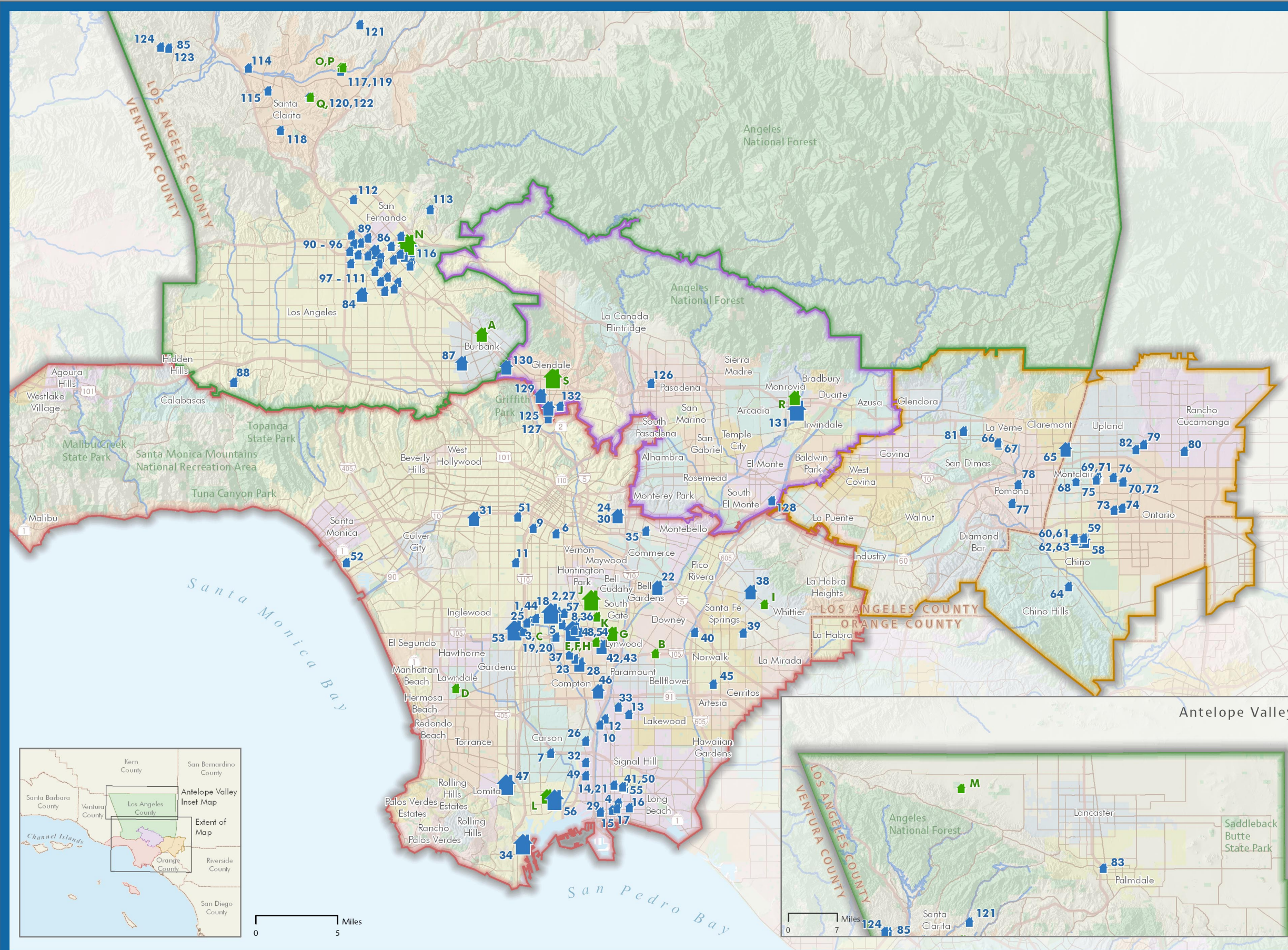
San Gabriel Valley	
R	1214-1218 Sherman Ave (4 units)
S	711-717 N Kenwood St (1 unit)

**Size of Projects**

- 1 - 3 Units
- 4 - 10 Units
- Over 10 Units

**Habitat for Humanity Service Areas**

- Greater Los Angeles
- San Fernando & Santa Clarita Valleys
- San Gabriel Valley
- Pomona Valley



**Project Sites 1990 - 2009**

